

IEU Code Clinic

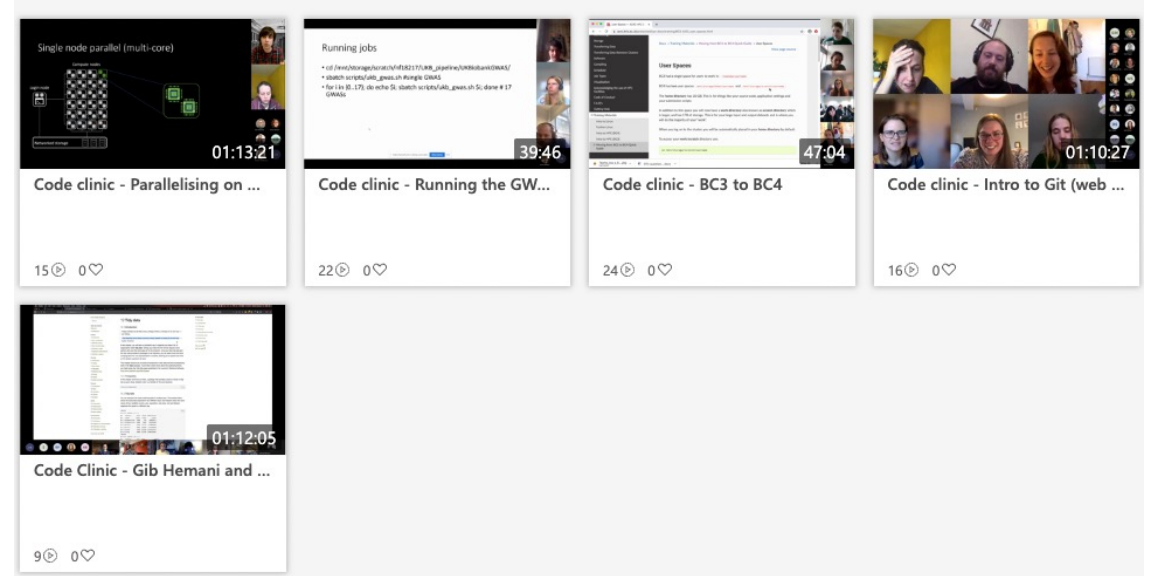
Yi Liu

Senior research associate in health data science

IEU Futures Retreat, 24 April 2023

IEU Code Clinic

- Lead by Louise Millard (2020 -- 2022);
Now co-lead by Yi Liu and Tom Palmer
- Sessions on coding topics
 - Previous meeting sessions
 - July 2022: Conda
 - June 2022: HPC pipelines
 - ...
 - New sessions in preparation with the software coordination group
- Forum



IEU Code Clinic: how to join

Groups

- grp-IEU-DMER_prog
- grp-IEU Events 254
- grp-HPC-users-group
- grp-ieu software coo...
- grp-IEU-Code-Clinic**

More

New group

Discover groups

Manage groups

Discover groups

Groups in Outlook give your team space for conversations, shared files, scheduling events, and more. These group suggestions are based on people you work and communicate with frequently.

Search groups across your organisation

grp-ieu-code-clinic

Press enter to search

grp-IEU-Code-Clinic

136 members

Joined group

Create new group

Microsoft Teams

[Redacted] has requested to join "grp-IEU-Code-Clinic".

grp-IEU-Code-Clinic

134 members | Private

grp-IEU-Code-Clinic

Accept or Deny request

© 2019 Microsoft Corporation
One Microsoft Way, Redmond, WA USA, 98052-7329
[Privacy policy](#)

Knowledge base: IEU intranet

<https://uob.sharepoint.com/sites/integrative-epidemiology>

MRC Integrative Epidemiology Unit

News and events ▾ Research ▾ **Teaching and learning** ▾ Committees ▾ Resources ▾ ... Public / Open ★ Following

[Home](#) > Teaching and learning

Teaching and learning

The IEU training group has prepared introductory modules on a range of relevant topics. These pages are curated by IEU members. If you have comments or suggestions for these pages please contact the IEU training group or the page curator.

- [Research practices](#)
- [Causal methods](#)
- [Epidemiology](#)
- [Genetics](#)
- [Statistics](#)
- [Epigenetics](#)
- [Coding](#)**
- [Induction](#)
- [Leadership training](#)
- [Metabolomics](#)
- [Bristol Medical School short courses](#)
- [Reproducibility](#)
- [Getting involved in teaching](#)
- [Guidance for postgraduate research students](#)
- [Professional Development](#)
- [Grant writing](#)
- [Software](#)
- [Promoting your research](#)

[Research practices](#)
Guidance on data and project management tools and processes that support reproducible and open science.

[Causal methods](#)
Recommended reading, video courses in causal methods and epidemiology.

[Genetics](#)
Recommended courses and reading for those new to genetics.

[Statistics](#)
Recommended courses and reading for those wanting to improve their epidemiology.

[IEU Induction](#)
Summary of induction processes for new staff

[Coding](#)
Guides and tutorials for common coding and data management.

[Epigenetics](#)
Recommended course and reading for those interested in epigenetics.

News and events ▾ **Research** ▾ Teaching and learning ▾

- Data Management**
- Public engagement
- Knowledge exchange & impact
- Support available for grant writing

Committees ▾ **Resources** ▾ ... Public / Open ★ Following

- Compute and data storage**
- Publishing and open access
- Templates and logos
- Grants and fellowships
- IEU Policies
- Journal clubs and reading groups

[Templates and logos](#)

Branding guidelines, poster and slide presentation templates, logos.

Knowledge base: MRC IEU Github Wiki

<https://mrcieu.github.io/wiki/>

The screenshot shows the MRC IEU Wiki homepage. At the top is a purple navigation bar with the logo and a search box. Below the bar is a sidebar with a table of contents including 'Home', 'Data management', 'Links and resources', 'Scripting', 'Software development', 'Articles', 'Code Testing', 'Creating bgen files from plink', 'Installing a specific version of R on a Linux server using Conda', 'Mounting a network drive on Linux', 'R tidyverse examples', 'Using Biomake', 'Using Docker', and 'Using Emacs'. The main content area is titled 'Home' and contains a welcome message, a 'Code clinic' section with a list of activities, and a 'Making changes' section with instructions for members.

<https://github.com/MRCIEU/wiki/wiki>

The screenshot shows the GitHub MRC IEU Wiki page. It features a 'Home' header with an 'Edit' and 'New page' button. The main content includes a welcome message, a list of actions for members, a 'Making changes' section with a detailed note and a list of steps, and a 'Differences between the source wiki and the public wiki website' section. A right-hand sidebar contains a 'Pages' list with 15 items, including 'Home', 'Making changes', 'Best practices in coding styles', 'Code Testing', 'Creating bgen files from plink', 'Data management', 'Installing a specific version of R on ...', 'Links and resources', 'Mounting a network drive on Linux', 'R tidyverse examples', 'Scripting', 'SITE_README', 'Software development', 'Using Biomake', 'Using Docker', and 'Using Emacs'.

MRC IEU Github Pages

https://mrcieu.github.io/

MRC Integrative Epidemiology Unit

Home About MRC IEU software browser | Details Wiki



Welcome to MRC Integrative Epidemiology Unit GitHub pages.

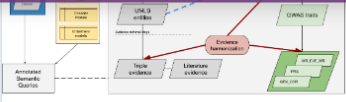
The MRC Integrative Epidemiology Unit at the University of Bristol (IEU) conducts some of the UK's most advanced population health science research. It uses genetics, population data and experimental interventions to look for the underlying causes of chronic disease.

Researchers at the MRC IEU have created a range of openly available software tools based on research methods developed within the unit.



MRC Integrative Epidemiology Unit

Home About MRC IEU software browser | Details Wiki



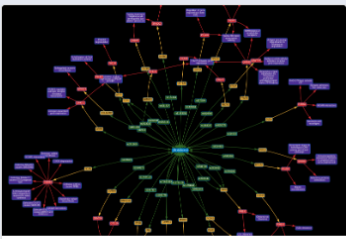
Annotated Semantic Queries
Natural language query interface to the EpiGraphDB platform
stage active maintenance license GPLv3
Software link Detail Source code

EpiGraphDB Graph Database
Neo4j graph database of the EpiGraphDB platform
stage active maintenance license GPLv3
Software link Detail Source code

EpiGraphDB R package
R package for EpiGraphDB
stage active maintenance license GPLv3
Software link Detail Source code

epigraphdbpy
Python package for EpiGraphDB
stage active maintenance
Software link Detail

EpiViz
R package and shiny web app for the production of circo plots to display results from large epidemiological analyses
stage active development license MIT
Software link Detail Source code



EpiGraphDB WebUI
EpiGraphDB platform web application
stage active maintenance license GPLv3
Software link Detail Source code

ewaff
R package for performing epigenome-wide association studies (EWAS).
stage active maintenance

EWAS Catalog β
The MRC-IEU catalog of epigenome-wide association studies
The EWAS Catalog
A database of associations from EWAS summary datasets, for querying or download.
PARENT PROJECT
Software link Detail

The EWAS Catalog R package
R package that can be used to query The EWAS Catalog database
stage active development
Software link Detail Source code

geograbi
A tool for efficiently grabbing usable metadata and experiment data off GEO

FATHMM

Feedback welcome

- Code clinics related facilities
 - (ir)regular talks
 - support forums
 - knowledge bases
- Tell us what you need
 - Yi Liu
 - Tom Palmer
 - Use the Teams channels

